

Contributions are tax deductible

() \$250 Business or Organization

() \$75 Sponsor

() Other

() \$25 Membership, yearly organization dues
(dues may be reduced or waived by the ENI Board)

Organization _____

Name _____

Address _____

City, State, Zip _____

Telephone _____

Email _____

Make checks payable to ENI

YES, I want to support our neighborhoods!

Enclosed is my tax deductible donation of \$ _____

Donation to ENI for services for all neighborhoods
and member organizations

Donation designated for specific neighborhood
organization: \$ _____

Designated for specific project (write in)

Please contact me about how I can volunteer

Eugene Neighbors, Inc.
PO Box 44, Eugene OR 97440

Eugene Neighbors, Inc.
PO Box 44, Eugene, OR 97440

[] [] []
[] [] []
[] [] []

Active Bethel

Amazon

Cal Young

Churchill

Downtown

Fairmount

Far West

Friendly

Goodpasture Island

Harlow

Jefferson/Westside

Laurel Hill Valley

Northeast Neighbors

River Road

Santa Clara

South University

Southwest Hills

Southeast Neighbors

Trainsong

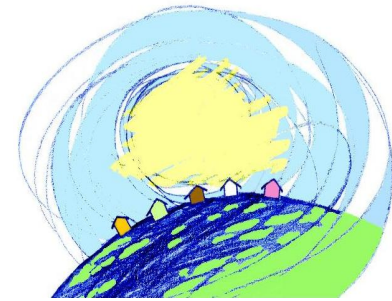
West Eugene

Whitaker

Neighborhood Leaders

Helping Eugene Neighbors Help Themselves

Eugene Neighbors, Inc.



Helping Eugene Neighbors Help Themselves

PO Box 44 Eugene, OR 97440

www.eugeneighborsinc.org
established August 2000
as a 501(c)3 nonprofit organization



*We can help you make a difference
in your neighborhood*

MISSION STATEMENT

To support member neighborhood associations and affiliated organizations by providing support and services:

- Financial
- Organizational development skills
- Educational

Eugene Neighbors Inc., is a tax-exempt organization whose mission is to serve the needs of its member organizations. Membership is open to any City of Eugene recognized neighborhood association or community association or community organization which supports neighborhoods.

HISTORY

Eugene Neighbors Inc. (ENI) is a 501(c)(3) nonprofit organization formed in August, 2000 by members of Eugene's Neighborhood Leaders Council to ensure the continuity of neighborhood associations and community organizations by providing financial stability in times of unstable city funding.

ENI OBJECTIVES

- Provide a mechanism for obtaining funding for neighborhood projects.
- Identify neighborhood needs and problems and research solutions.
- Provide educational activities for new and continuing neighborhood leaders and members.

ENI GOVERNANCE

ENI is governed by a seven member board elected by member associations. This board is made up of individuals experienced in the operations of Neighborhood Associations and other community organizations. The Board is comprised of a Chair, Vice Chair, Secretary, Treasurer and 3 at large members.



*ENI holds an annual meeting
every 4th quarter
to meet its responsibilities
and report its activities to members*

FINANCIAL SERVICES FOR ENI MEMBER ORGANIZATIONS

ENI provides an array of financial services to its member organizations, including:

- **Directed Donations.** Individuals and businesses can make tax-deductible donations through ENI that the donor designates for a specific project. These are called "directed donations." As the fiscal sponsor, ENI provides tax-deductibility for donors. Fundraising for neighborhood projects can be much easier for the member organization.

- **Fund Management.** With ENI all funds are held in a subaccount. This is especially useful for an organization that does not have its own bank account. Checks are written from the sub-account funds as needed for the organization's expenses and projects.

EDUCATIONAL

- ENI will facilitate informational workshops for member organizations as requested. Neighborhood projects are shared during ENI's annual meeting.

GRANT ASSISTANCE

- ENI can serve as the formal applicant for grants for its member organizations. This is helpful when the grantor requires the applicant have a tax-exempt status.